

Families Take the Lead: Dynamic Innovations for an Overburdened System

Linda Henderson Smith, PhD, LPC, CPCS, CCMP – National Sr. Director, Children and Crisis Programs

Andrea Goetz, MSW – Executive Director of Child & Family Division

Through joint perspective join us as we delve into the discovery of how combining community-based resources with clinical innovations can lead to a unique evidence-based program for families.

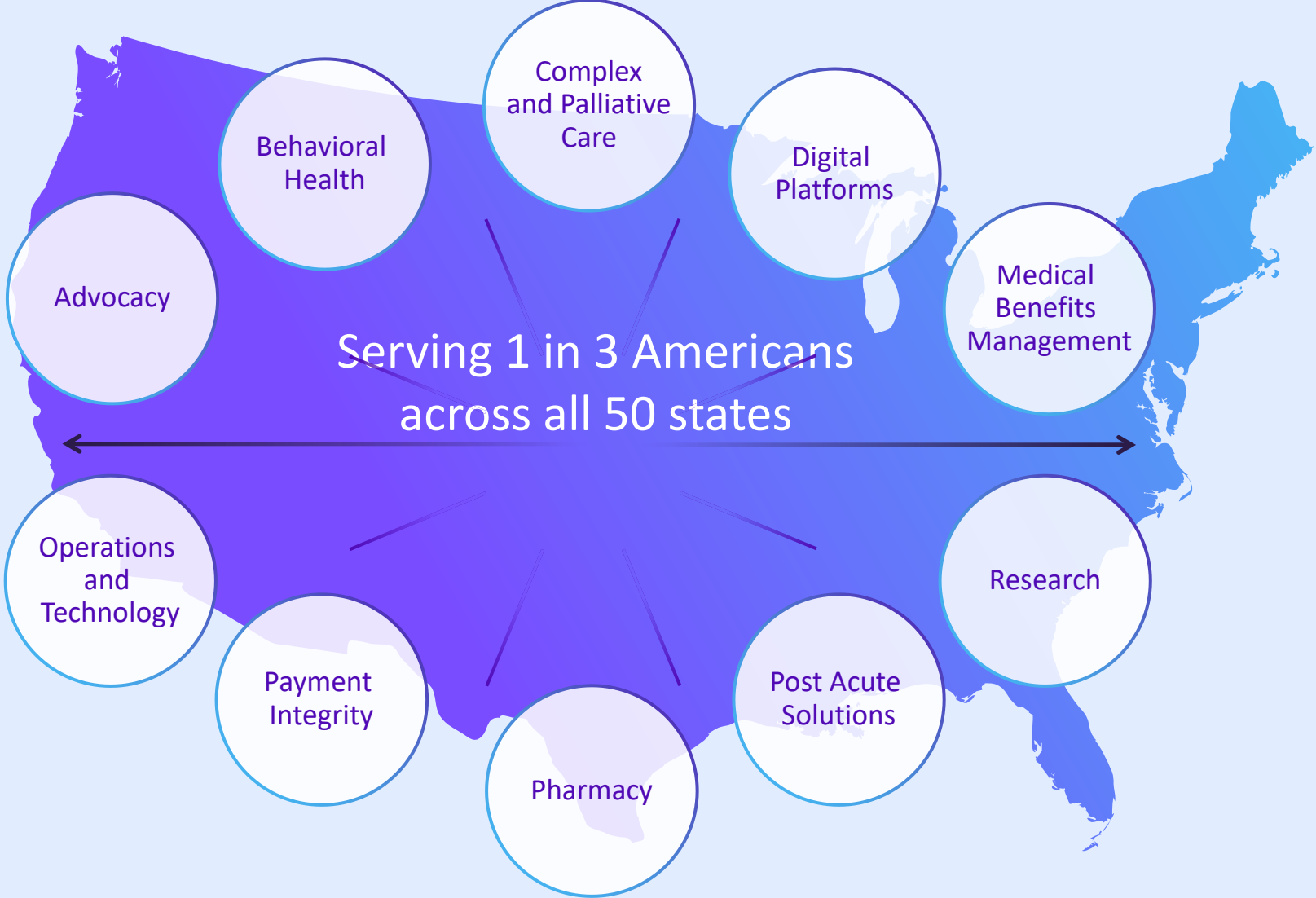


Linda Henderson – Smith, PhD, LPC,
CPCS, CCMP

Andrea Goetz, MSW



Carelon has expansive, whole health capabilities and a broad reach



ILLINOIS
MENTAL HEALTH COLLABORATIVE
FOR ACCESS AND CHOICE



Illinois Mental Health Collaborative

Since 2008 Carelon has served as the Statewide Administrative Service Organization (ASO) for Illinois through partnership with IDHS/DMH as the Illinois Mental Health Collaborative.

From millions of lives managed to hundreds of thousands of mental health support calls through the Illinois Warm Line, Carelon has long been an organization whose mission is to help people live their lives to their fullest potential.

The Warm Line is a **free state-wide support line staffed by Certified Recovery Support Specialists (CRSS).**



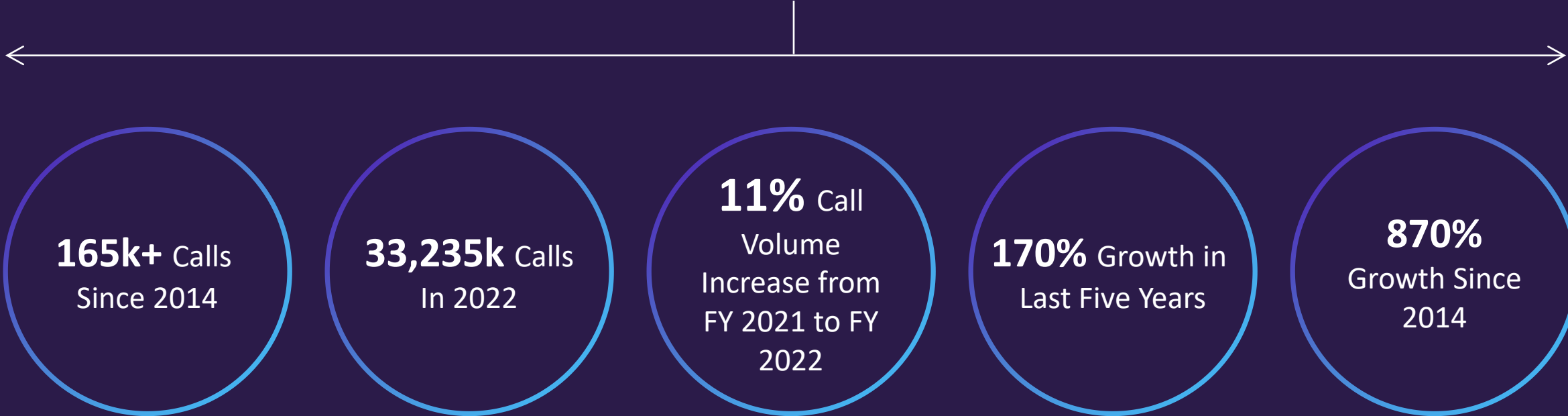
Illinois-based employees

In-state presence since 2008 through contract with IDHS/ DMH

Collaborative employees represent the communities they serve

Carelon Demonstrated Recovery Support Experience in Illinois

Illinois Warm Line



The child & adolescent mental health crisis is a national emergency

Carelon Behavioral Health supports over 40M members across the country, and intimately aware of the rising demand for mental health services by children and young adults. We've expanded our capabilities to address some of the most pressing concerns including:



1.9M children have a clinical diagnosis of depression

There has been a **63% increase in adolescent depression in the last 5 years**



16% of children globally, age 10-19 have a mental health diagnosis

23 – 58% of youth requiring inpatient psychiatric care experienced **boarding** and average durations range from **5 – 41 hours in EDs** and **2 – 3 days in inpatient medical units**



Demand for services is well outpacing supply

47: Estimated number of child psychiatrists per 100,000 children needed to meet demand

9.75: Actual number of child psychiatrists per 100,000 children

70%: The percentage of U.S. counties that have no child psychiatrists

IL Children's BH Numbers

Like states across the country, Illinois is experiencing a youth mental health crisis.

Nearly 40% of young people in Illinois who experienced major depressive episodes were unable to receive mental health care.

2,215

Illinois youth require residential treatment each year

22K

youth in Illinois DCF's custody

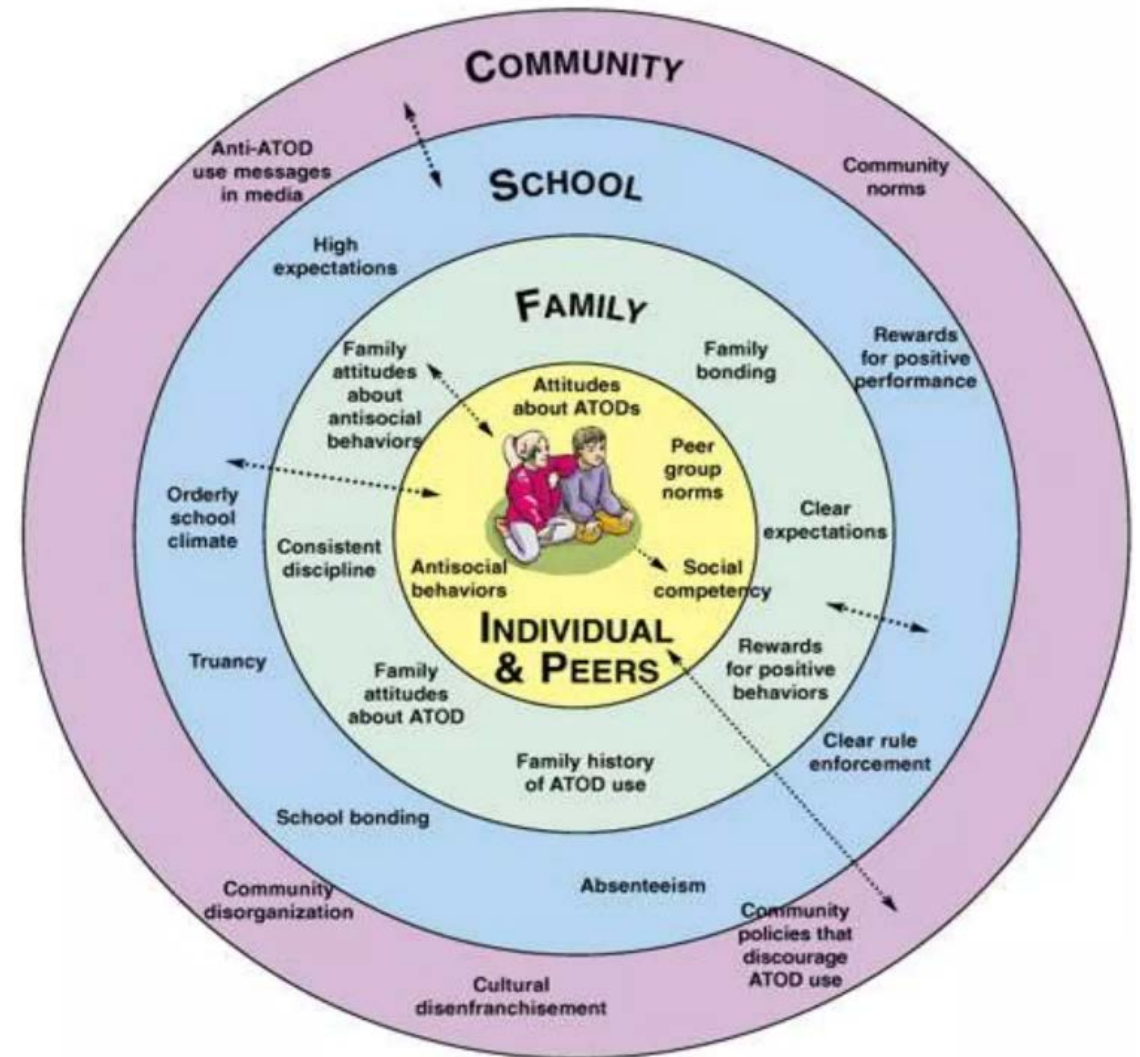
165K +

Children aged 0 – 20 received a Medicaid-paid outpatient MH service in FY '22



Nothing About Us Without Us

- Family is the enabler for access and engagement
- Family context matters
- Families aren't just coping they are dealing with a large spectrum of complex issues
- Healthy environments lead to healthy outcomes
- Evidence-informed skills and capabilities provide glue to families and providers



Proven programs that drive and deliver whole system change

Placing families in the center of care, CT demonstrates the power of positive relationships

Prioritizing youth and their families



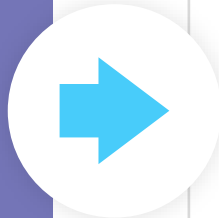
Caregivers and youth have access to needed resources, supports and services



Empowers families to make their voices heard and act as full decision makers in their lives



Evidence-based, Wraparound care ensures children are supported from their early years on



Wraparound care with child welfare involved families & vulnerable youth resulted in:

92.3% of families who completed the program met their goals

95% of families had no indicated child welfare involvement within six months of discharge

98.1% of high needs youth discharged to treatment met their goals prior to discharge.

85% Families developed their own care plan within 30 days



